

Invented for life



**BOSCH**

# PCR-Test for SARS-CoV-2

√ivalytic from Bosch –  
The universal diagnostic platform.  
**Universal, intuitive, fast.**



√ivalytic

# PCR-Test for SARS-CoV-2

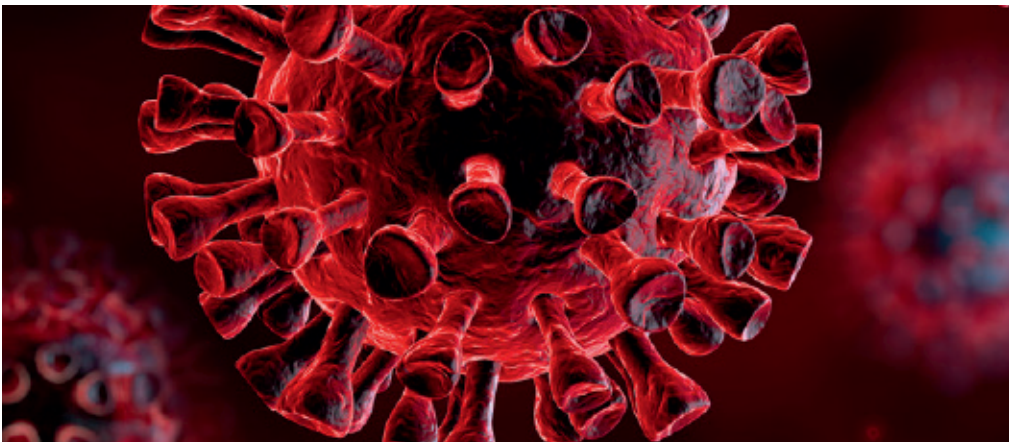
The SARS coronavirus 2 (SARS-CoV-2) is a respiratory pathogen which is responsible for the novel disease COVID-19. The infection emerged for the first time in the final months of 2019 and has since developed into a global pandemic. With over 10 million cases and 500,000 deaths reported as of end of June 2020<sup>1</sup>, COVID-19 is challenging health care systems and society all over the world.

As we start to return to as much normality in everyday life as possible, it is important not only to have effective

infection-preventing measures in place, but also to trace the chains of infection through extensive testing. To this end, the Vivalytic SARS-CoV-2 test provides a fast and reliable solution directly at the point of care.

**With a workflow that couldn't be easier:** collect the patient sample, insert the sample into the cartridge, and – without any further preparations – start the test run. Less than 39 minutes later, results are available.

<sup>1</sup>Center for Systems Science and Engineering (CSSE) at Johns Hopkins University



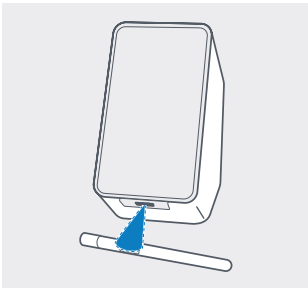
**Sample material**  
Nasopharyngeal and/or oropharyngeal swab

**Volume**  
300 µl

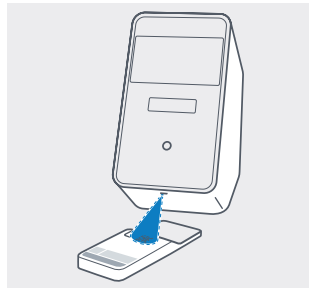
**Detection method**  
PCR-test

**Detectable pathogen**  
SARS coronavirus 2 (SARS-CoV-2)

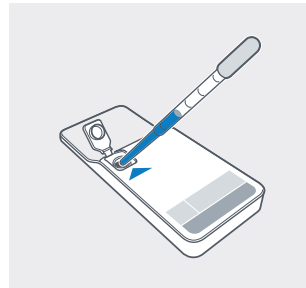
## Vivalytic Workflow: Good results can be this easy.



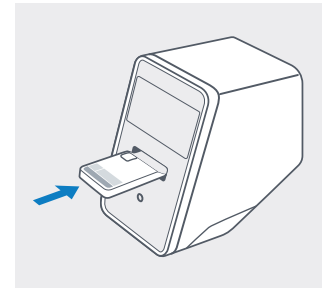
① Scan sample code.



② Scan cartridge code.



③ Insert the sample and close cartridge lid.



④ Insert cartridge. The test starts automatically.

Our biocontent cooperation partner is:



r-biopharm<sup>®</sup>  
[www.r-biopharm.com](http://www.r-biopharm.com)

Subject to technical modifications. Printed in Germany. Any colour deviations are due to restrictions in the printing process. Printed on 100% chlorine-free bleached cellulose, produced in an environmentally friendly process. Not all products are available in all regions. Ask your local sales representative for availability in specific markets. For in vitro diagnostic use only.

**Bosch Healthcare Solutions GmbH**  
Stuttgarter Str. 130, 71332 Waiblingen, Germany